

NESP LOCK & DAM NO. 25

Jose R. Lopez, PE, PMP
L&D 25 Project Manager
St. Louis District
USACE

Bryan J. Dirks, PE
L&D 25 Technical Lead
Inland Navigation Design Center
USACE

01 August 2024



U.S. ARMY



US Army Corps
of Engineers®





MISSISSIPPI RIVER LOCK 25-BLUF

STATUS / DASHBOARD

PROJECT SAFETY



Phase 2a – Bulkhead Fabrication & Supply

**No lost time accidents*

PROJECT STATUS SUMMARY



Phase 2 – 1,200 ft Lock; Design SPI: 1.27

Phase 2a – Bulkhead Fabrication & Supply
Awarded: 23 Feb 2024

Phase 2c – Construction-Operation Facilities
Scheduled Award: 30 Sept 2024

Next Major Contract Award(s):

Phase 2b – D/S Guide Cell – FY25

Phase 2 – New 1,200 ft Lock – FY27

FINANCIAL STATUS SUMMARY



Design is on budget

Planned Value: \$34.5M

Earned Value: \$43.9M

Actual Value: \$34.6M

Cost Performance Index: 1.27

**through June 2024*

EXECUTIVE SUMMARY:

- **Project was re-benchmarked in July due to change in acquisition strategy.**
- The delivery method will now be Design, Bid, Build and the remaining BIL appropriations will be used to fund the base in a base + options contract structure, **subject to Acquisition Plan approval.**
- **PDT has conducted five 1-on-1s with potential contractors.**
- In the absence of full project funding or efficient funding, there is a high likelihood for increases in schedule duration and total project cost.
- Current project status:
 - **Entered the 65% design review phase and conducting 65% CWE update.**
 - RE acquisition process (e.g. preliminary title) for Temporary Work Areas **is ongoing.**
 - **Supplemental NEPA Supplemental Environmental Assessment is under review.**



MISSISSIPPI RIVER LOCK 25–SCHEDULE/FUNDING



- Out year **cost and durations** for Phase 2 construction are highly dependent on funding. Various funding scenarios have been developed.
- Phase 2a, 2b, & 2c fully funded through construction.
- All phases fully funded through design.
- **Green** is completed work, **blue** is funded but to be completed, **red** is unfunded work.



MISSISSIPPI RIVER LOCK 25–FUNDING SUMMARY

Allocations:	ARRA (\$M)	GI(\$M)	CG(\$M)	IWTF(\$M)	BIL(\$M)	Total(\$M)
Prior to FY 22:		\$15.72				\$15.72
FY 22:					\$732	\$732
FY 23:						\$0
FY 24:						\$0
FY 25:						\$0
Total to Date:					\$732	\$747.72
Remaining TPC Balance:						\$1,531

Total Project Cost (TPC)	\$2,263M	June 2023
Authorized Cost:	Not specific for Lock 25. Navigation and Ecosystem Sustainability Program carries these at the program level.	
Escalated Cost:		
902 Limit:		
PED Cost:	\$144.6M	June 2023
EDC Cost:	\$60.0M	June 2023
S&A Cost:	\$116.9M	June 2023

Fiscal Year Funding Scenario Breakout: Various scenarios have been developed. All highly dependent on funding streams.

	FY 2027	FY 2028	FY 2029	FY 2030	FY 2031	FY 2032	FY 2033	FY 2034	FY 2035	FY 2036	FY 2037	FY 2038	TOTAL
Efficient	\$300M	\$500M	\$500M	\$200M	-	-	-	-	-	-	-	-	\$1,500M
Inefficient	\$168M	\$103M	\$326M	\$224M	\$338M	\$339M	\$320M	\$325M	\$124M			-	\$2,267M

**All cost shown are estimated Total Project Costs (Fully Funded) and have not undergone an ATR review. Previous ATR review focused on a singular fully funded contract.*

*** These are not capabilities; strictly speaking. But rather amounts needed to maintain assumed construction schedule.*



MISSISSIPPI RIVER LOCK 25–ISSUES/CHALLENGES

- **Challenge:** Project funding up to the certified cost.
- **Mitigation Strategies:** Contract structure to account for uncertain funding availability.
- **Challenge:** In-the Wet Construction Methodology – Box Form
- **Primary Mitigation Strategy:** Early and often engagement with construction industry.
- **Challenge:** Minimizing impacts and maximizing predictability to existing traffic.
- **Mitigation Strategies:** Continued engagement with navigation industry and collaboration with construction industry on closures and width restrictions.
- **Challenge:** Market Conditions and Labor/Material Availability
- **Primary Mitigation Strategy:** Economic Price Adjustment Clause.

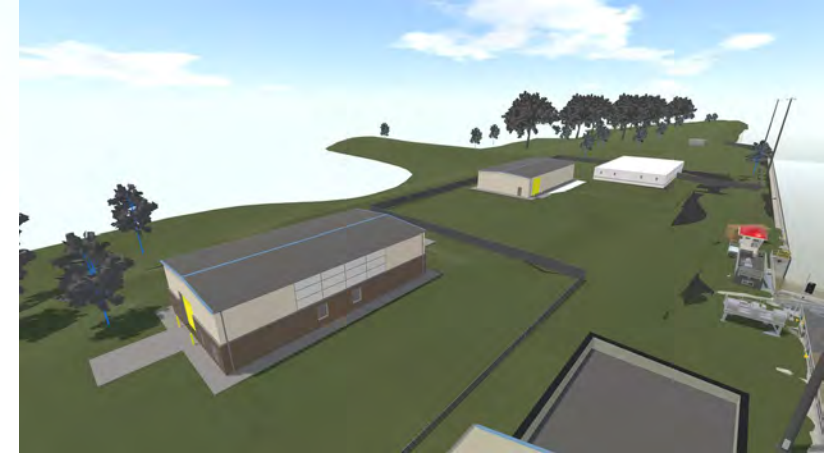


MISSISSIPPI RIVER LOCK 25–LOOK AHEAD

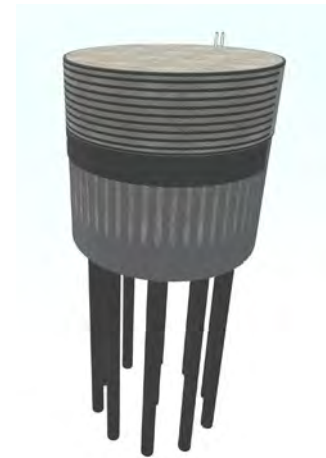
- **Progress:** Phase 2a - Bulkhead Fabrication and Supply
 - Awarded 23 February 2024
 - Construction completion March 2027
 - \$17.7M Firm Fixed Price Contract
- **Progress:** Phase 2c – CON-OPS Facilities
 - Design/Build through Huntsville Center
 - Scheduled for Award – Sept 2024
- **Progress:** Phase 2b – Guide Cell
 - Scheduled for Award – Q1 FY25
- **Progress:** Phase 2 – 1,200 ft New Lock
 - Currently in 65% Design Review Phase
 - Scheduled for Design Completion – Jun 2026



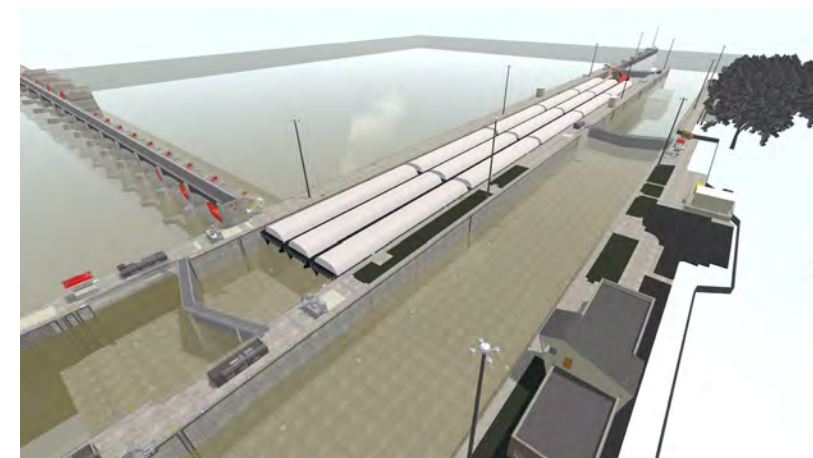
Phase 2a



Phase 2c



Phase 2b



Phase 2



BACKUP SLIDES



MISSISSIPPI RIVER LOCK 25-OVERVIEW

Authorization: Title VIII of Water Resources Development Act (WRDA) 2007, P.L. 110-114 and WRDA 2022, P.L. 117-263. Authorized cost in legislation is at the Navigation Ecosystem Sustainability Program (NESP) level, not for the individual projects.

Purpose/Description: The construction of a new 1200-foot lock at Lock & Dam 25 will significantly reduce delays and increase safety. Proposed project features include construction of a new 1200-foot deep founded lock located in the auxiliary miter gate bay, construction of an upstream ported guard wall totaling 1200-feet, and a 650-foot downstream approach wall.

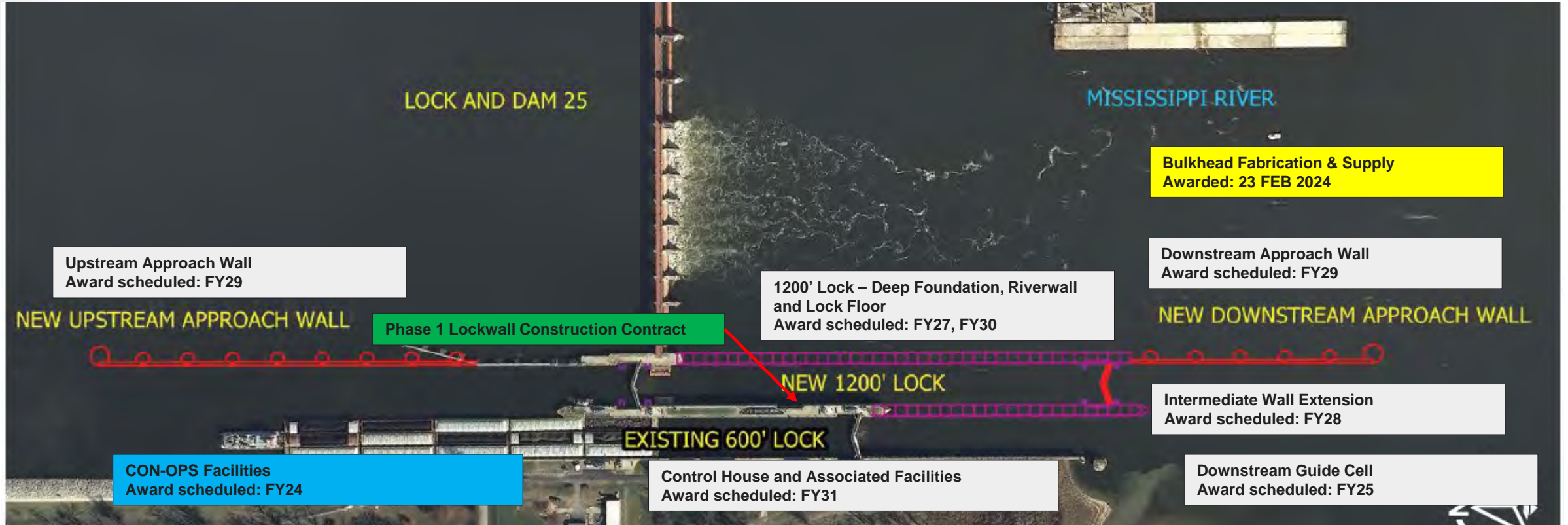
Schedule: Design: Complete FY26; Construction: Complete TBD, dependent on funding stream.

Cost: Latest certified Total Project Cost (TPC) is \$2,263,062,000 (Certified in June 2023) with 59% contingency at a 15% level of design. This cost was validated with industry offers for the ECI-IDaC solicitation. Current Working Estimate (CWE) for 35% is \$2,181,487,000. The next CWE update will occur at the 65% milestone in the Fall 2024. A new certified cost will be obtained then as well.

***estimates shown assume full or efficient funding.**



MISSISSIPPI RIVER LOCK 25 NEW 1200' LOCK-SCOPE



Contract Legend

Completed
Current
Upcoming
Future

*Timelines assume full/efficient funding and are subject to change.

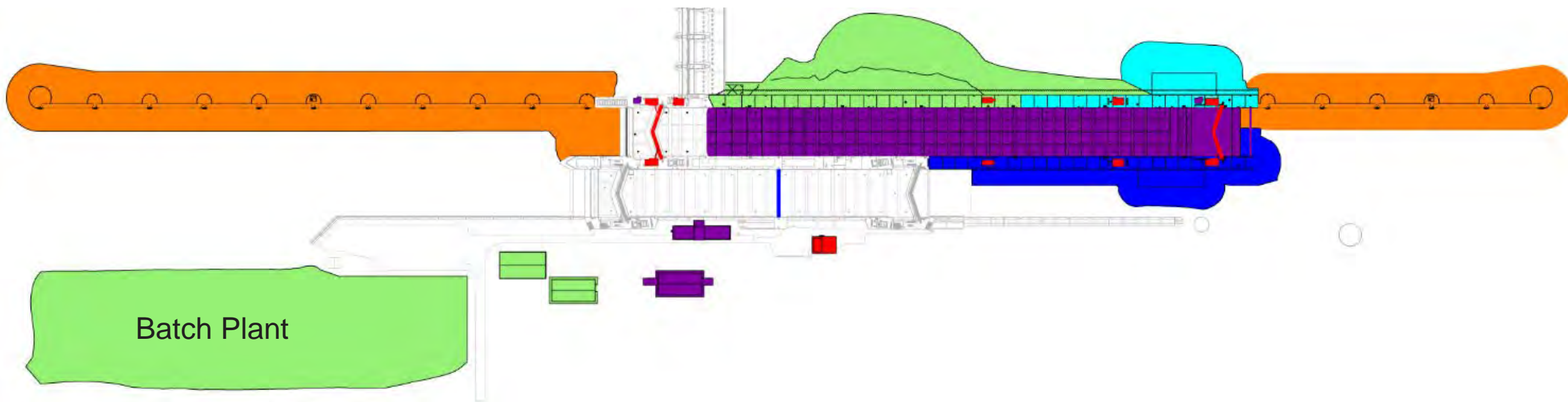


UNCONSTRAINED/EFFICIENT SCENARIO

OPTION NO.	DESCRIPTION
BASE	SCOUR REMEDIATION AND FOUNDATION PREPARATION; RIVER WALL TO MONOLITH 331; STORAGE BUILDING
OPTION 1	INTERMEDIATE WALL AND 600' CHAMBER MODIFICATIONS
OPTION 2	HYDRAULIC STEEL STRUCTURES, MCC BUILDINGS, NEW ELECTRICAL SERVICE EQUIPMENT
OPTION 3	GUARD WALLS
OPTION 4	RIVER WALL MONOLITHS 332-349
OPTION 5	VERTICAL FACILITIES & IN CHAMBER CONSTRUCTION

Lock 25 New 1200 FT Lock												
Option Number	Description	Estimated Cost Fully Funded (including labor & contingency)	Fiscal Year									
			2026	2027	2028	2029	2030	2031	2032	2033	2034	
Base	Scour Remediation & Foundation Preparation; River Wall to Monolith 331	\$700,000,000										
Option 1	Intermediate Wall & 600 FT Chamber Modifications	\$409,000,000										
Option 2	Hydraulic Steel Structures, MCC Buildings, New Electrical Service Equipment	\$46,000,000										
Option 3	Guard Walls	\$333,000,000										
Option 4	River Wall Monoliths 332-349	\$218,000,000										
Option 5	Vertical Facilities & In Chamber Construction	\$475,000,000										

**All cost shown are estimated Total Project Costs (Fully Funded) and have not undergone an ATR review. Previous ATR review focused on a singular fully funded contract.*





CONSTRAINED ~\$100M/YR SCENARIO

OPTION NO.	DESCRIPTION
BASE	SCOUR REMEDIATION AND FOUNDATION PREPARATION; RIVER WALL TO MONOLITH 331
OPTION 1	RIVER WALL MONOLITHS 332-341
OPTION 2	RIVER WALL MONOLITHS 342-349
OPTION 3	INTERMEDIATE WALL MONOLITHS 232-242
OPTION 4	INTERMEDIATE WALL MONOLITHS 243-252
OPTION 5	INTERMEDIATE WALL MONOLITHS 228, 229, 231 AND 600' CHAMBER MODIFICATIONS
OPTION 6	HSS, MACHINERY AND INSTALLATION
OPTION 7	TEMPORARY STRUTS
OPTION 8	VERTICAL FACILITIES AND ELECTRICAL
OPTION 9	LOCK CHAMBER CONSTRUCTION
OPTION 10	PRECAST CONCRETE BEAMS
OPTION 11	UPPER GUARD WALL
OPTION 12	LOWER GUARD WALL

Lock 25 New 1200 FT Lock																			
Option Number	Description	Estimated Cost Fully Funded <i>(including labor & contingency)</i>	Fiscal Year																
			2026	2027	2028	2029	2030	2031	2032	2033	2034	2035	2036	2037	2038	2039	2040		
Base	Scour Remediation & Foundation Preparation; River Wall to Monolith 331	\$700,000,000																	
Option 1	River Wall Monoliths 332-341	\$121,000,000																	
Option 2	River Wall Monoliths 342-349	\$100,000,000																	
Option 3	Intermediate Wall Monoliths 232-242	\$167,000,000																	
Option 4	Intermediate Wall Monoliths 243-252	\$186,000,000																	
Option 5	Intermediate Wall Monoliths 228, 229, & 231, 600 FT Chamber Modifications	\$141,000,000																	
Option 6	HSS, Machinery, & Installation	\$173,000,000																	
Option 7	Temporary Struts	\$108,000,000																	
Option 8	Vertical Facilities & Electrical	\$212,000,000																	
Option 9	Lock Chamber Construction	\$363,000,000																	
Option 10	Precast Concrete Beams	\$138,000,000																	
Option 11	Upper Guard Wall	\$215,000,000																	
Option 12	Lower Guard Wall	\$250,000,000																	

**All cost shown are estimated Total Project Costs (Fully Funded) and have not undergone an ATR review. Previous ATR review focused on a singular fully funded contract.*

